

# **Regional infrastructure of spatial information Geoportal of Košice Self-Governing Region**

[www.geoportalsk.sk](http://www.geoportalsk.sk)

# Deploying of Geoportal KSK

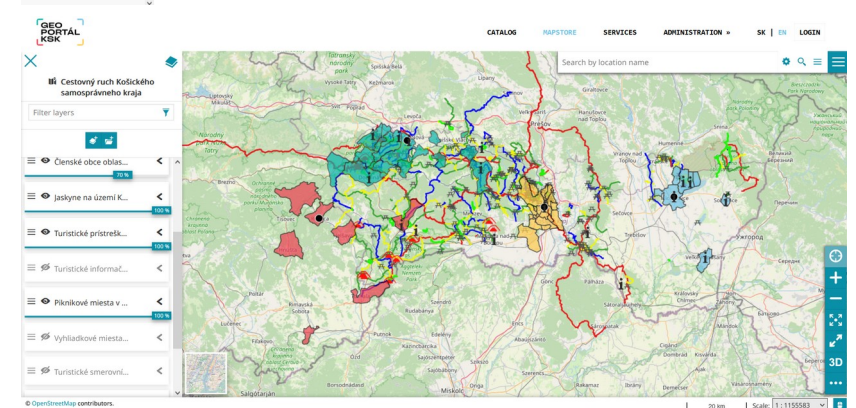
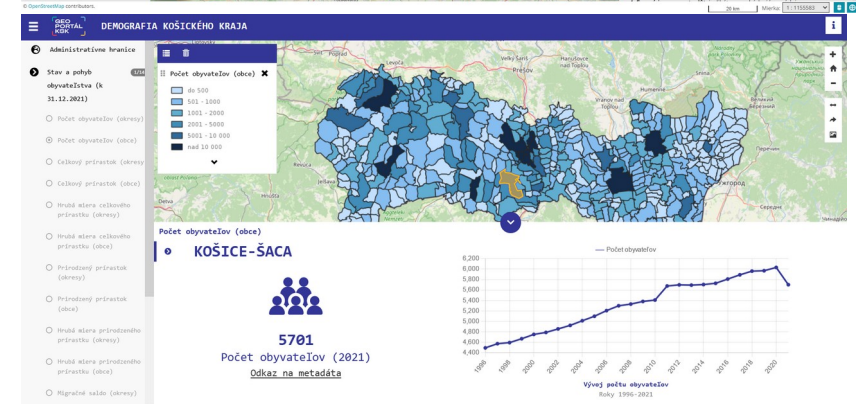
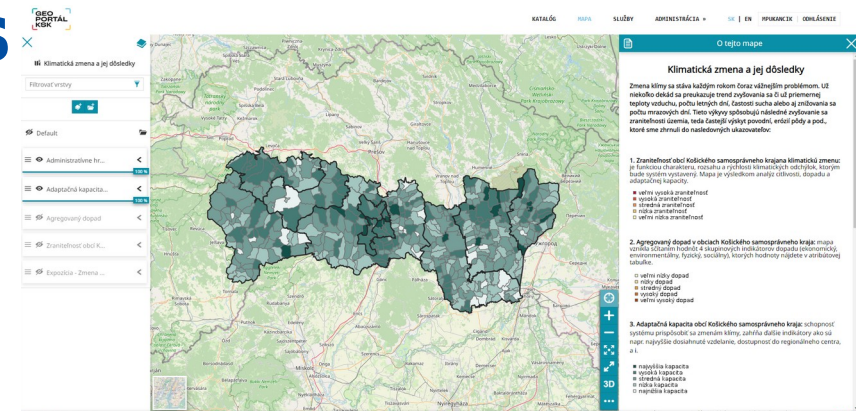
- KSK decided to use open source software's
- from 04/2022 (222 datasets, 24 map applications, 92 % open data)
- in cooperation with World Bank
- based on geOrchestra
- data processing in QGIS
- harvesting of national data
- ...

The screenshot displays the Geoportal KSK website interface. At the top left is the logo 'GEO PORTÁL KSK'. The top navigation bar includes links for 'O GEOPORTÁLI', 'NÁSTROJE', 'APLIKÁCIE', 'ČLÁNKY', 'KONTAKT', and 'EN SK'. A banner image shows a cyclist on a road, with the text 'KOSTROVÁ SIEŤ CYKLOTRÁS V KOŠICKOM KRAJI' and a red 'ZISTIŤ VIAC' button. Below the banner are three service cards:

- Aplikácie**: Prehľadanie dát jednoduchým a prívetivým spôsobom prostredníctvom tematických mapových aplikácií. Includes a yellow arrow and 'ZISTIŤ VIAC' link.
- Katalóg**: Prístup ku datovému katalógu otvorených a geopriestorových údajov o Košickom kraji na prezeranie a stiahnutie. Includes a blue arrow and 'ZISTIŤ VIAC' link.
- Mapa**: Mapový prehliadač pokročilejší online mapový nástroj na prehliadanie a analýzu geodát z katalógu vo vrstvách. Includes a teal arrow and 'ZISTIŤ VIAC' link.

# Examples of processed map applications and datasets

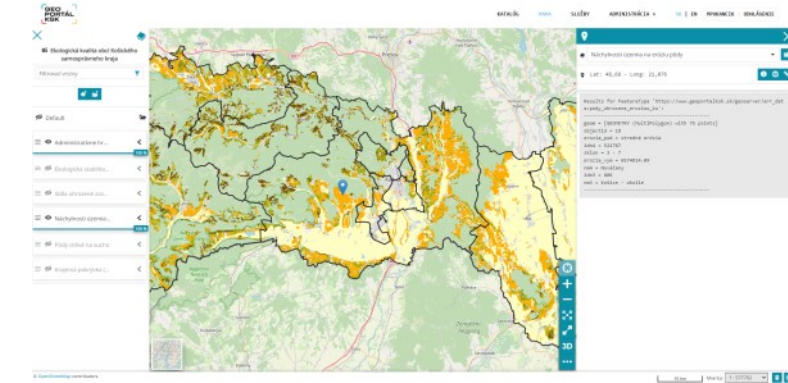
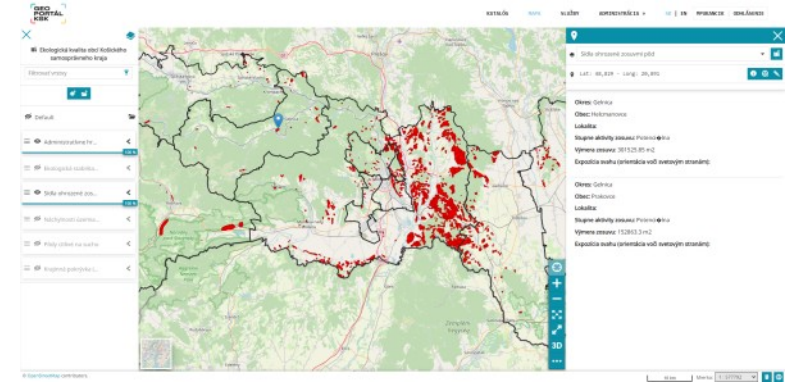
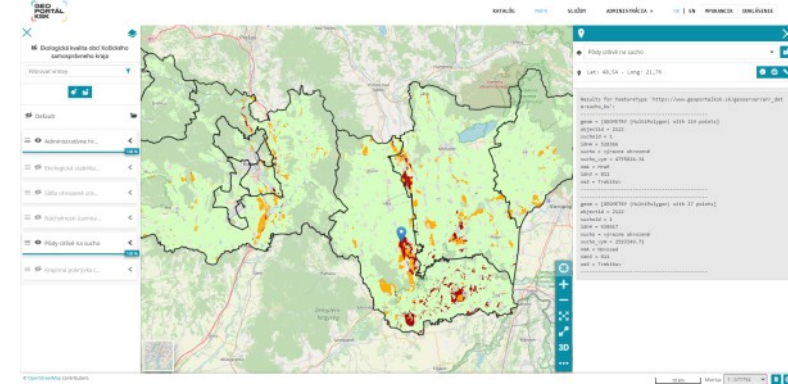
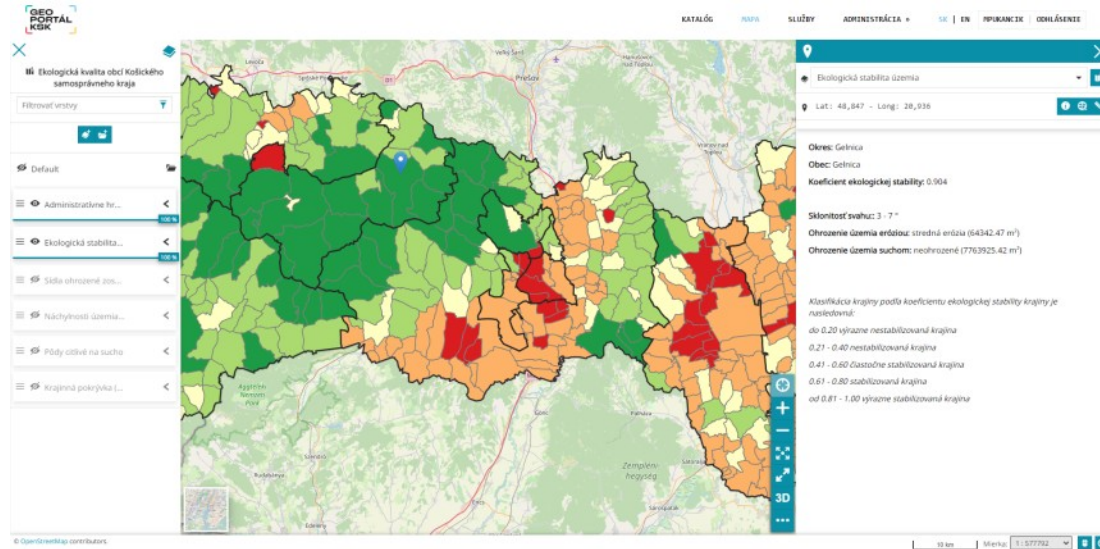
- Population – Demography
- Flood threat
- Land use plan of Košice Region region
- Climate change and its consequences in municipalities
- Transport
- Healthcare
- Ecology and protected areas
- Tourism
- Cycling routes
- Supported projects
- Marginalized communities
- Geology
- ...



# Example of Map application

## Ecological quality of municipalities

- Layers:
  - Ecological stability of municipalities
  - Land cover (CORINE Land Cover)
  - Settlements threatened by landslides
  - Soils sensitive to drought
  - Susceptibility of the territory to soil erosion



# Challenges for the future

- sysadmin support for geOrchestra in Slovakia (IT support)
- further development
- cooperation with the national level - data integration
- providing API access of KSK data
- personnel provision of the GIS department
- cooperation with universities
- cooperation with other self-governing regions in Slovakia (they mainly use ESRI products)

















**GEO PORTÁL KSK**

ABOUT THE GEOPORTAL TOOLS APPLICATIONS ARTICLES CONTACT EN SK

## Applications

Thematic web map applications capture specific views on the given issue. Each application is built on resources from the KSK Data Catalogue, contains several layers and tries to convey a more complex view of a specific issue. The applications are gradually supplemented and updated.

Everything Finance transportation Environment Hello Socially Tourism other

 Administrative boundaries	 Tourism	 Cycle routes	 Time availability of places
 Transportation	 Subsidies 2021	 Subsidies 2022	 Ecology
 Protected areas	 Climate change	 Culture	 Air quality
 Property of KSK	 Population - Demography	 Population - Work	 Flood threat